



**Current Transformer  
Technologies LTD**



## Control Power Transformer

**Model CPTS3-60-10**

**CPTS5-95-10** rev 050919

### CERTIFICATIONS:



ISO 9001

QUALITY  
MANAGEMENT

#### FREQUENCY:

60 Hz.

#### THERMAL RATING:

10 kVA at 30°C. ambient

8.6 kVA at 55°C. ambient

#### STANDARD SECONDARY VOLTAGE:

120 volts

#### INSULATION LEVEL:

CPT3:

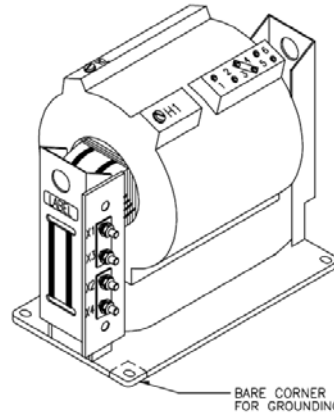
5 kV, 60 kV BIL full wave.

CPT5:

15 kV, 95 kV BIL full wave.

#### APPROXIMATE WEIGHT:

250 lbs.



- Primary terminals are ¼-20 brass screws with one flat washer and star washer.
- Secondary terminals are brass studs ½-13 with one flat washer, lock washer and two nuts, plus series/parallel links.
- The transformer High Voltage winding is vacuum encapsulated in epoxy resin.

- Supplied with 1±7-1/2% or 2±2-1/2% taps above & below nominal voltage on the primary winding.
- Available as unfused only.
- Self cooled.
- Steel mounting base.
- For indoor use.

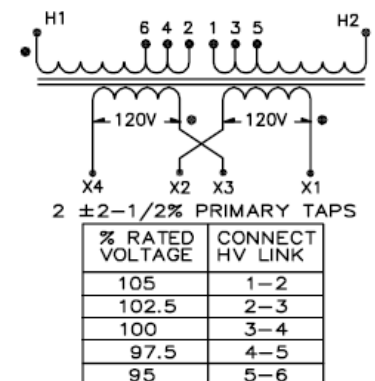
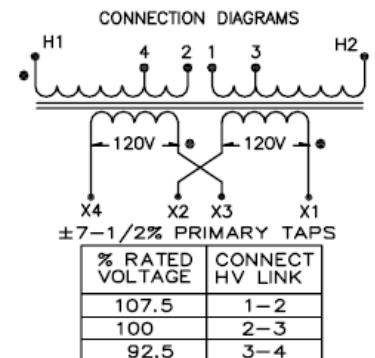
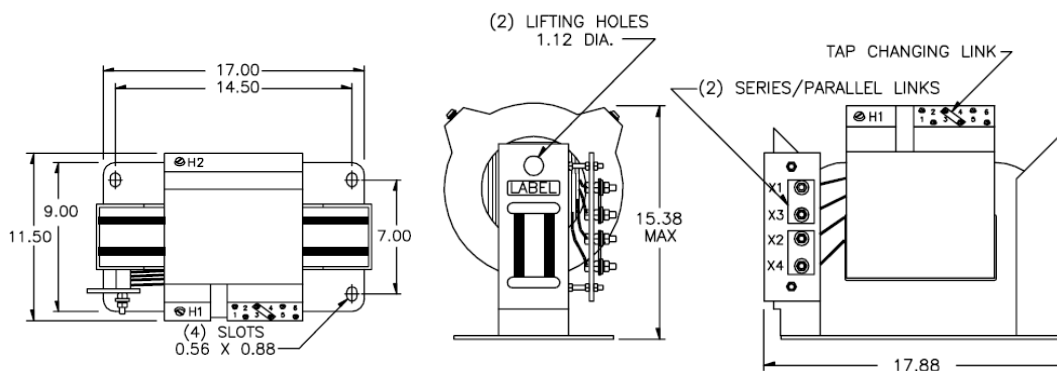
***CATALOG NO.	PRIMARY VOLTAGE	RATIO	SECONDARY VOLTAGE	**FUSE RATING
CPTS3-60-10-242	2400	20:1	120/240	15E
CPTS3-60-10-4161	4160	34.7:1	120/240	7E
CPTS3-60-10-482	4800	40:1	120/240	7E
CPTS5-95-10-722	7200	60:1	120/240	5E
CPTS5-95-10-842	8400	70:1	120/240	5E
CPTS5-95-10-123	12000	100:1	120/240	3E
CPTS5-95-10-1242	12470	104:1	120/240	3E
CPTS5-95-10-1322	13200	110:1	120/240	3E
CPTS5-95-10-1382	13800	115:1	120/240	3E
CPTS5-95-10-1442*	14400	120:1	120/240	3E

\*Not available with primary taps.

\*\*Note all fuse ratings are based upon NEC transformer overcurrent protection recommendations. Specific applications may require other ratings.

\*\*\*For 1±7-1/2% taps use suffix "A" after Catalog No.

\*\*\*For 2±2-1/2% taps use suffix "B" after Catalog No.



Products are manufactured in a plant whose quality management system has been certified to be in compliance with ISO 9001:2015 by NQA